



**citystate**  
cruises

 **6222 9222**

 [www.citystatecruises.com](http://www.citystatecruises.com)  
 [cruises@citystatetravel.com](mailto:cruises@citystatetravel.com)

   
CitystateCruises TA 648

DUAL HOMEPORT FROM  
MALAYSIA & SINGAPORE

# Genting Dream

*A Resort Cruising At Sea*



## What is your pleasure?

Your experience on board Genting Dream is anything and everything you make of it. Pack your day, live it up, wind things down, thrill or chill.



**Hours of exploration**  
for the kids



Find your inner  
**adventure junkie**



Get a little  
**retail therapy**



Step into the  
**lap of luxury**



**BUFFET** hello!



**Work up**  
that sweat

*We'll make it happen.*

# A Resort Cruising At Sea

Genting Dream has been outfitted with every amenity and comfort you could imagine for a cruise that you'll return for time and again.

**It's a city on water where the view changes every day!**

## What a day on the Genting Dream looks like...



### The Lido

Our buffet-style restaurant with a smorgasbord of international and halal cuisine including vegetarian and non-vegetarian Indian dishes.



### Bar City

Sit back and enjoy world-renowned vintages, premium Scotch whiskies, cocktails or bubbly while we entertain you with performances and live bands.



### Rope Course & Zipline

Feel the thrill of gliding above the ocean on a 35-metre zipline.



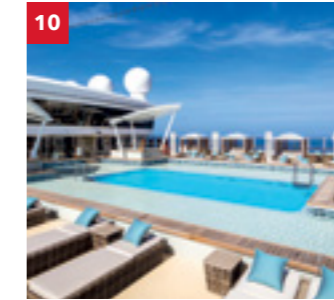
### Waterslide Park

Get drenched in fun on one of our six different waterslides.



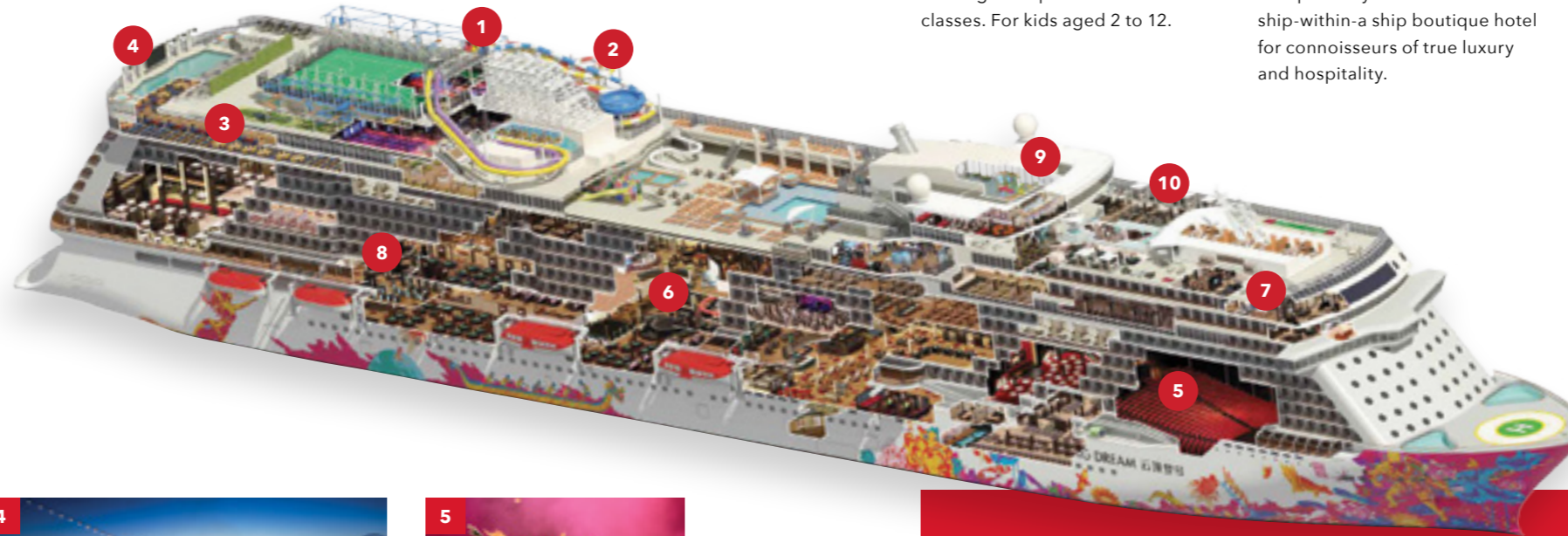
### Little Dreamers Club

Leave the kids with us while you explore the ship. They'll love our exciting line up of activities and classes. For kids aged 2 to 12.



### The Palace

An exclusive all-suite, all-inclusive enclave with private facilities and European-style butlers. It is a ship-within-a ship boutique hotel for connoisseurs of true luxury and hospitality.



## The long and short of the Genting Dream

At 335m end to end, we're bigger than a skyscraper and way more fun.



Take a virtual 360° tour

Gross Tonnage **150,695 tons**

Length **335m**

Width **40m**

Decks **18**

Passenger Capacity **3,352 (Lower Berth)**

Staterooms **1,674**

Manufacturer **Meyer Werft, Germany**



### Zouk & Zouk Beach Club

There's a party going on somewhere! Dive in at one of our famous pool parties or dance till dawn with our guest DJs at Zouk.



### Zodiac Theatre

Enjoy live production shows from our acclaimed entertainment team.



### Crystal Life Spa

Rejuvenate your mind, body and spirit in our Asian and Western-style spas. You can also enjoy a selection of healthy meals and beverages here.



### The Boutiques

Splurge on International luxury brands at our boutiques or outlet store.

| Restaurants & Bars        | DECK | Entertainment                   | DECK        | Sports & Recreation              | DECK        |
|---------------------------|------|---------------------------------|-------------|----------------------------------|-------------|
| Palm Court                | 19   | Zouk Private Party Deck         | 18          | Waterslide Park                  | 20          |
| Sun Deck Bar              | 17   | Zouk Beach Club                 | 17          | SportsPlex                       | 19          |
| The Lido**^               | 16   | Zouk                            | 17          | Mini-Golf                        | 18          |
| Pool Deck Bar             | 16   | RW@Sea                          | 8,7,6       | Rock Climbing Wall               | 18          |
| Crystal Life Cuisine      | 15   | Zodiac Theatre                  | 7           | Ropes Course                     | 18          |
| Dream Dining Room Upper*  | 8    | Karaoke                         | 6           | Sun Deck                         | 17          |
| Hot Pot                   | 8    | International Room              | 6           | Jogging Track                    | 17          |
| Umi Uma                   | 8    | Premium Room                    | 6           | Main Pool Deck                   | 16          |
| Bistro                    | 8    |                                 |             | Kids Water Park                  | 16          |
| Gelateria                 | 8    | <b>Retail</b>                   | <b>DECK</b> | Boardwalk                        | 8           |
| Bar City                  | 8    | Art Gallery                     | 8           | <b>Genting Club</b>              | <b>DECK</b> |
| Dream Dining Room Lower*  | 7    | The Boutiques                   | 7,6         | Club                             | 16          |
| Blue Lagoon               | 7    | Souvenir Mart                   | 6           | Lounge                           | 16          |
| Red Lion                  | 7    | Photo Gallery                   | 6           |                                  |             |
| Bar 360                   | 6    | <b>Teenagers &amp; Children</b> | <b>DECK</b> | <b>Other Services</b>            | <b>DECK</b> |
| Lobby Cafe                |      | Little Dreamers Club            | 16          | Business Center                  | 19          |
| Silk Road                 | 6    | Arcade                          | 16,6        | Bridge Viewing Room              | 15          |
|                           |      | <b>The Palace</b>               | <b>DECK</b> | Helipad Embarkation Lounge       | 9           |
| Palace Pool Side Café     | 18   |                                 |             | Function 8 (Multi-purpose Venue) | 8           |
| Palace Pool & Sun Deck    | 18   | <b>Beauty &amp; Wellness</b>    | <b>DECK</b> | Tributes                         | 8           |
| Palace Gymnasium & Studio | 18   | Crystal Life Fitness            | 15          | Executive Boardrooms             | 7           |
| Palace Spa                | 18   | Crystal Life Spa                | 15          | Reception                        | 6           |
| Palace Restaurant         | 17   | Le Salon                        | 15          | Shore Excursions                 | 6           |
| Palace Lounge             | 17   | The Gentlemen's Barber          | 15          | Cruise Consultant                | 6           |
| Palace Reception          | 17   | Crystal Life Asian Spa          | 5           | Clinic                           | 5           |
|                           |      |                                 |             | Meeting Rooms                    | 5           |

\*Inclusive Restaurant ^Halal Options Available

# Accommodations

Our well-appointed staterooms up the ante on your stay with every comfort and convenience you'll need.

## PALACE VILLA

Approx. 224 sq.m  
Max Occupancy 6  
Deck 17  
1 King-size Bed  
1 Queen-size Bed  
1 Double Sofa Bed



## PALACE PENTHOUSE

Approx 56 - 115.4 sq.m  
Max Occupancy 4 - 6\*  
Deck 13 / 16  
1 King-size Bed +  
1 Double Sofa Bed /  
1 Queen-size Bed +  
2 Double Sofa Beds /  
1 Queen-size Bed +  
1 Double Sofa Bed



## PALACE DELUXE PREMIUM

From 41 - 61 sq.m | Max Occupancy 4  
Deck 9 / 10 / 11 / 12 / 13 / 15  
1 King-size Bed + 1 Double Sofa Bed



## PALACE DELUXE SUITE

From 41 sq.m | Max Occupancy 4 | Deck 15  
1 Queen-size Bed + 1 Double Sofa Bed



## PALACE SUITE

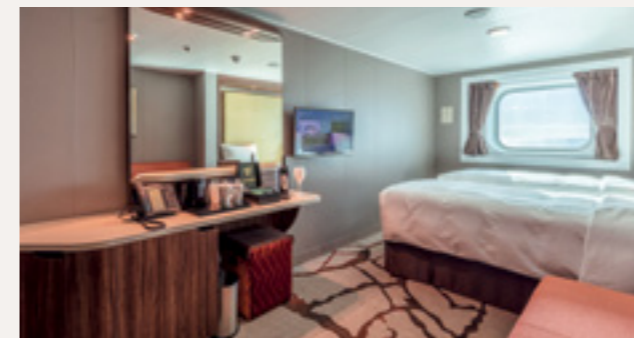
From 37 sq.m | Max Occupancy 4  
Deck 13 / 15 / 16 / 17  
1 Queen-size Bed + 1 Double Sofa Bed



## BALCONY / BALCONY DELUXE STATEROOM

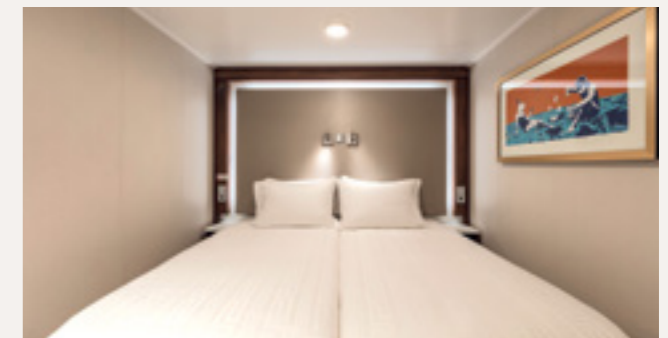
|  |   |
|--|---|
| From 20 sq.m<br>Max Occupancy 3 - 4<br>1 Queen-size Bed +<br>1 Single Sofa Bed /<br>1 Single Sofa Bed +<br>1 Ceiling Pullman Bed | From 22 - 28 sq.m<br>Max Occupancy 3 - 4<br>1 Queen-size Bed +<br>1 Single Sofa Bed /<br>1 Single Sofa Bed +<br>1 Ceiling Pullman Bed |
|--|---|

Deck 8 / 9 / 10 / 11 / 12 / 13 / 15



## OCEANVIEW STATEROOM

From 16 - 35 sq.m | Max Occupancy 2 - 4  
Deck 5 / 9 / 10 / 11 / 12 / 13  
2 Single Beds / 2 Single Beds + 1 Single Sofa Bed / 2 Single Beds + 1 Single Sofa Bed + 1 Ceiling Pullman Bed



## INTERIOR STATEROOM

From 13 - 14 sq.m | Max Occupancy 2 - 4^  
Deck 5 / 8 / 9 / 10 / 11 / 12 / 13 / 15  
2 Single Beds / 2 Single Beds + 1 Ceiling Pullman Bed / 1 Single Bed + 1 Pullman Bed + Double Sofa Bed

\* The maximum occupancy of designated Palace Penthouses can be up to 6 guests upon request, subject to stateroom availability.

^ The above image is for a stateroom configuration for 2 persons - other stateroom configurations for 3 persons and 4 persons are also available.



## *A Brand New* **Elevated Experience**

The Palace is our all-suite concept within Genting Dream, your private club on board - the largest luxury ship-within-a-ship enclave found on any cruise liner. For connoisseurs of true Asian luxury, hospitality and exuberant living.

## *All-Inclusive Privileges*

- 1 All-Suite Accommodations
- 2 All-Butler Service
- 3 All-Indulgent Benefits
- 4 All-Encompassing Spaces



### **On your arrival**

- Access to VIP lounge at terminal
- Priority check-in with butler assistance
- Fast track security clearance
- Priority luggage check-in and check-out with express delivery

### **In your suite**

- 24-hour butler concierge service
- Standard Wi-Fi package throughout cruise
- Dream beds and luxurious Italian linens from Frette™
- Premium bath amenities
- Nespresso™ machine with gourmet coffee and tea
- Welcome minibar beverages and snacks
- Welcome fruit plate and delights
- Pressing service
- Fresh flower arrangement in Palace Penthouses and Villas

### **When you dine**

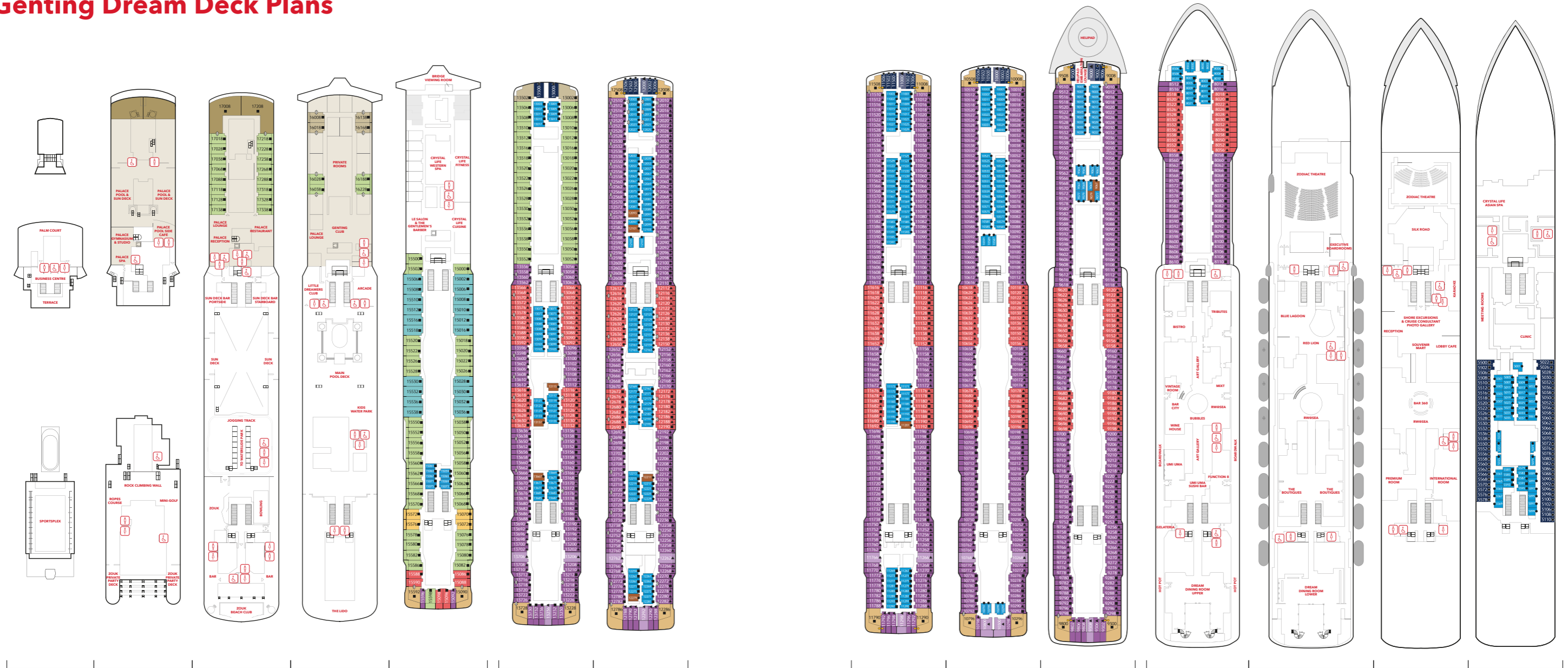
- Exclusive access to The Palace Restaurant with complimentary dining, including delicacies created with premium ingredients and exclusively featured food items
- Set meal entitlements at designated specialty dining restaurants
- Complimentary healthy meal options in The Palace Restaurant
- Happy Hour with complimentary drinks such as selected wines, beers and non-alcoholic beverages at selected venues
- Free-flow of chilled juices, Chinese and Japanese teas, and coffee throughout the day at selected venues
- Priority booking for Chef's Table and Vintage Room
- Complimentary in-suite dining for Palace Villa guests

### **When you explore**

- Priority access to live production shows
- Selected exclusive Kids Programme for children between 2 and 12 years of age
- Bespoke enrichment programme featuring a highly curated collection of inspiring talks and events

*Privileges are subject to change without prior notice.*

# Genting Dream Deck Plans



**DECK 19** Lounge, Business Centre & SportsPlex  
**DECK 18** The Palace, Ropes Course, Mini-Golf, Rock Climbing Wall & Zouk Private Party Deck  
**DECK 17** The Palace, Suites, Zouk & Zouk Beach Club  
**DECK 16** Genting Club, Suites, Entertainment Venues, Water Activities & Restaurant  
**DECK 15** Western Spa, Fitness Centre, Suites, Balcony Deluxe, Balcony & Interior Staterooms  
**DECK 13** Suites, Balcony Deluxe, Balcony, Oceanview & Interior Staterooms  
**DECK 12** Suites, Balcony Deluxe, Balcony, Oceanview & Interior Staterooms  
**DECK 11** Suites, Balcony Deluxe, Balcony, Oceanview & Interior Staterooms  
**DECK 10** Suites, Balcony Deluxe, Balcony, Oceanview & Interior Staterooms  
**DECK 9** Suites, Balcony Deluxe, Balcony, Oceanview & Interior Staterooms, Helipad  
**DECK 8** Restaurants, Bars, Lounges & Multi-purpose Venue, Balcony Deluxe, Balcony & Interior Staterooms  
**DECK 7** Main Theatre, Executive Boardrooms, Restaurants, Retail Venues & Entertainment Venues  
**DECK 6** Main Lobby, Reception, Restaurant, Café Lounges & Entertainment Venues  
**DECK 5** Asian Spa, Oceanview & Interior Staterooms

- Categories**
- Palace Villa
  - Palace Penthouse
  - Palace Deluxe Premium
  - Palace Deluxe Suite
  - Palace Suite
  - Palace Suite (Accessible)
  - Balcony Deluxe Stateroom
  - Balcony Stateroom
  - Balcony Stateroom (Accessible)
  - Oceanview Stateroom
  - Oceanview Stateroom (Accessible)
  - Interior Stateroom
  - Interior Stateroom (Accessible)
  - Up to two persons occupancy available
  - Third person occupancy available
  - Up to four persons occupancy available
  - ↑ Connecting Stateroom
  - Adjoining Stateroom

**When it comes to safety, we are leaving nothing to chance.**

### 360° Comprehensive Preventive Measures / Enhanced Cleaning Process

Over 40 health and safety measures cover eight areas of the ship ranging from embarkation and disembarkation, cabins, public spaces, safe food and beverage handling procedures, recreational facilities, ventilation systems, medical services and crew safety.

### 100% Fresh Air Ventilation System, No Air Re-Circulation

Incoming air is filtered and a dedicated ventilation system redirects air out of the ship to ensure no re-circulation of air between cabins. Air intake and exhaust are on opposite sides of the vessel.

### Well-Equipped Medical Centre

Well-equipped medical centre with COVID-19 testing capability. Doctors including an Infection Control Officer available on every sailing.

### Regular Sanitisation

On-board disinfection and cleaning has been stepped up. All public areas of the ship will be cleaned multiple times throughout the day to ensure a safe cruise for all.